

Park Regulations of the Archipelago National Park



METSÄHALLITUS
FORSTSTYRELSEN

Cover photo: Teemu Köppä

Photos: Teemu Köppä, Seppo Keränen

Park Regulations of the Archipelago National Park

The Archipelago National Park is located in the outer archipelago, on the Southern rim of the Archipelago Sea. The actual National Park is surrounded by a vaster local government collaboration area containing state-owned land and water areas which then, with the exception of the area belonging to the Finnish Defence Forces, form the National Park. The park constitutes the core part of the more extensive Archipelago Sea Biosphere Reserve, which was founded by UNESCO in 1994 to promote the study of the interrelationship between man and nature and to promote sustainable development within the area. The objective of conservation is to protect the nature and culture of the Archipelago Sea, to safeguard the related traditional uses of nature, to maintain an active archipelago community, and to promote environmental research.

The park encompasses approximately 2000 islands and islets within a vast area in the outer Archipelago Sea. Most

of the islands are rugged and barren, but there are forests on the largest ones. The area is typically characterised by vast island groups consisting of small islands and separated by large stretches of water. Due to the effect of lime, the soil on some islands is very rich with nutrients, and these islands boast a variety of rare plants. The terminal moraine of the third Salpausselkä runs through the National Park decorating the sea with beautiful sand and pebble islands with long reefs.

The park includes beautiful wooded meadows, boasting an abundance of flowers, that are still cared for using traditional methods, as well as pasturage and other traditional landscapes; the National Park is e.g. maintaining grazing on many of the islands. The Utö and Bengtskär lighthouses guide seafarers at the outer edge of the park.

You can explore the National Park by your own boat, use the archipelago commuter ferries, or take a guided boat tour.



METSÄHALLITUS

Decree

Scope

Park Regulations of the Archipelago National Park

Provisions providing the base for jurisdiction

Nature Conservation Act 1096/1996, sections 18 and 20.

Target groups

Users of the Archipelago National Park

Validity

16 April 2001 – for now

Under sections 18 and 20 of the Nature Conservation Act (1096/1996), Metsähallitus has issued the following Park Regulations for the Archipelago Natural Park located in the municipality of Kimitoön and the town of Pargas.

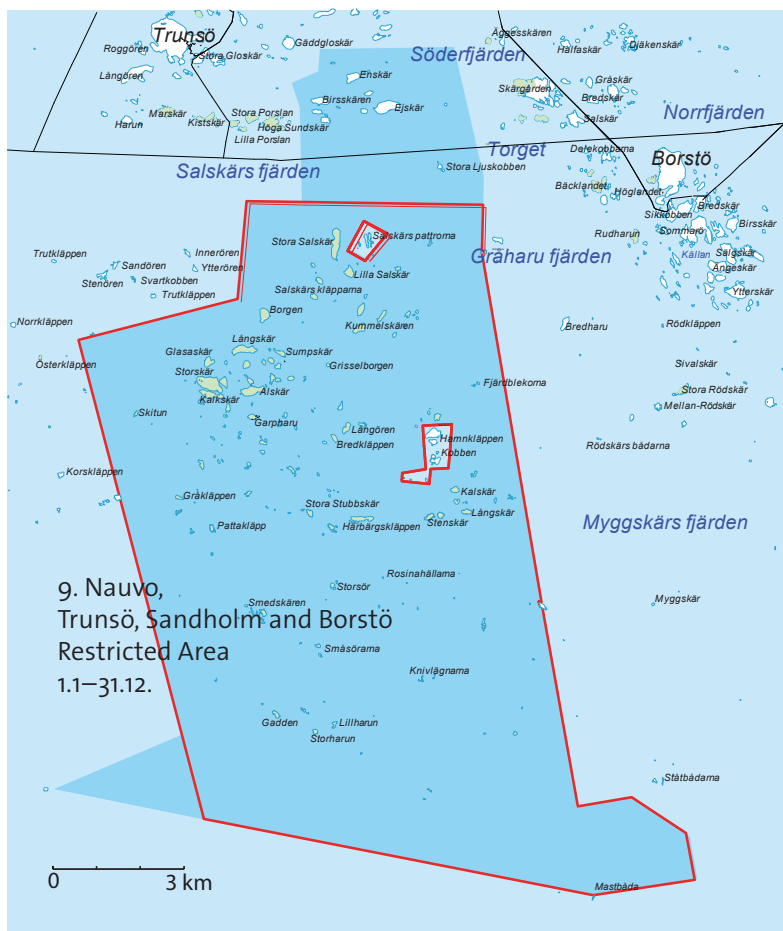
The Archipelago Natural Park was established by the Act adopted on 1 January 1983 (645/1982) (amended by Act 130/1991), and provisions for its protection, management and care are issued by decree (1123/1994). Provisions pursuant to the above-mentioned Acts and decrees, as well as the Nature Conservation Act (1096/1996), the Hunting Act (615/1993) and the Fishing Act (286/1982), are included in the

Park Regulations. In addition, the Park Regulations include provisions which Metsähallitus is authorised and obligated to issue in a landowner capacity and as the authority in charge of the administration of the National Park. The provisions of the Park Regulations abide by the principles of the framework plan for management and use approved by the Ministry of the Environment on 5 July 1999 under the relevant decree (1123/1994).

The National Park area comprises the state-owned land and water areas, excluding the areas under the jurisdiction of the Finnish Defence Forces, that fall inside the marked line on the map annexed to the Act of Establishment (645/1982). These Park Regulations are also applied to areas added to the National Park after its establishment.

The Archipelago National Park was established to protect the nature and culture of the Archipelago Sea, to safeguard the related traditional uses of nature, to maintain an active archipelago community, and to promote environmental research and general recreational activities in nature. The National Park offers opportunities for boating, education and research.





General information

1. In the National Park it is forbidden to take or damage trees, bushes or other plants or their parts, to extract earth materials or in other ways damage soil or rock or the sea floor, to kill, catch or disturb wild vertebrates or to destroy their nests, and to catch or collect invertebrates. Other activities that may have an adverse effect on the local natural conditions, the landscape or the preservation of animal or plant species are also prohibited in the National Park. It is also forbidden to leave waste in the area, to act in a way that disturbs other people, to have dogs, cats or other pets running at large, and to damage structures, information boards, antiquities, wrecks, fences and ruins located in the National Park.

Limitations on moving

2. It is allowed to land on the islands of the National Park and to move by boat in the park waters. The islands may be explored on foot or by skiing in the wintertime. Landing, setting ashore and moving in the restricted areas stated in the annex to these Park Regulations is, during the time periods stated in the annex, allowed only with a special permission from Metsähallitus. Restricted areas and the valid restrictions are marked in the terrain.

3. Scuba diving is allowed in the National Park waters, apart from the restricted areas of Grimsöar in Korpo and Trunsö, Sandholm and Borstö in Nagu, where diving is only allowed with a Metsähallitus permit.



Making fire, camping and using wilderness huts

4. Lighting a camp fire or a similar open fire is only allowed at sites marked for this purpose. Wood reserved for this purpose may be used sparingly to light a camp fire. Lighting a fire is, however, forbidden if the forest fire warning is in effect in the area. The use of a camp stove is allowed in the National Park.

5. Camping is only allowed on areas assigned for this purpose;

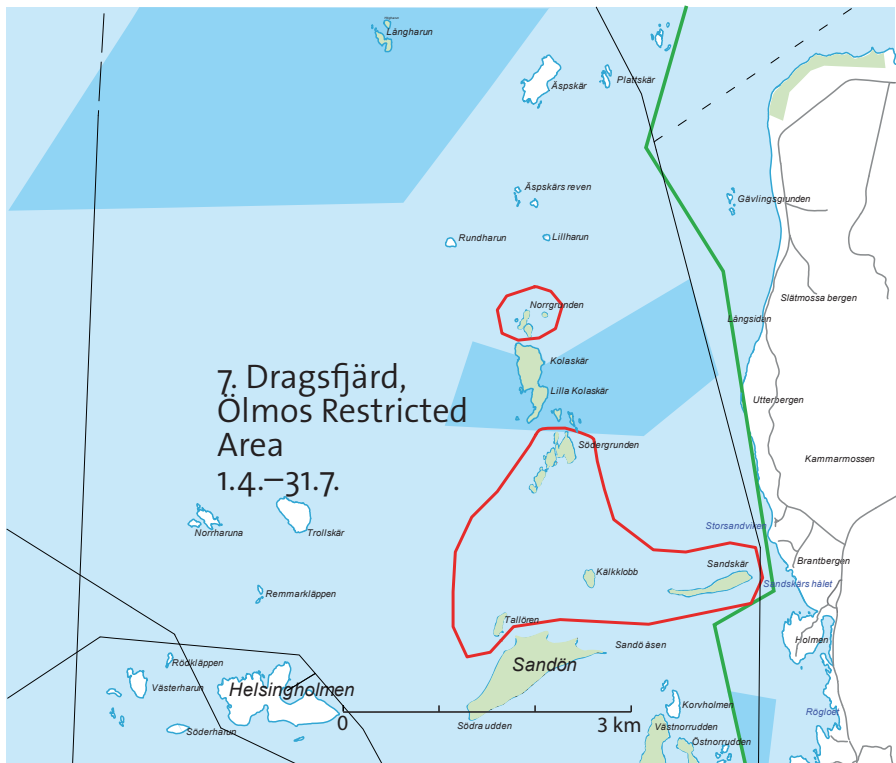
Houtskär: Nölstö

Korpo: Aspö Långlandet, Björkö Byviken, Brunsö, Stora Hästö, Kalgarholm, Konungskär, Jurmo, Moringharun, Utö, Sundskär, Österskär, Små Österskär

Nagu: Berghamn, Västerby, Gullkrona, Dalskär, Lökholm, Kråkskär, Nötö, Bodö

Dragsfjärd: Högsåra, Sandviken, Storfallan, Högländ, Vänö, Yxskär, Ölmos, Sandö

6. The open wilderness huts in Konungsskär, Notvarpharun and Gärskär may be used for temporary lodging.



Picking berries and mushrooms

7. Picking berries and edible mushrooms and gathering driftwood is allowed, unless restricted by the limitations on moving or by other regulations.

Fishing

8. Hook and line fishing, ice fishing and lure fishing with a single rod and lure are allowed under sections 8 and 88 of the amended Fishing Act (1045/1996), unless prevented by the limitations on moving. Other forms of fishing are allowed only with a written permission from Metsähallitus and are subject to the conditions stated in the permit.

Special provisions concerning local residents and primary industry operators

9. The Fishing Act (286/1982) grants local residents unrestricted fishing rights, and such fishing is allowed in the National Park as laid down in more detail in the Fishing Act. Such fishing must, however, be carried out in accordance with the regulations concerning the restricted areas of the National Park.

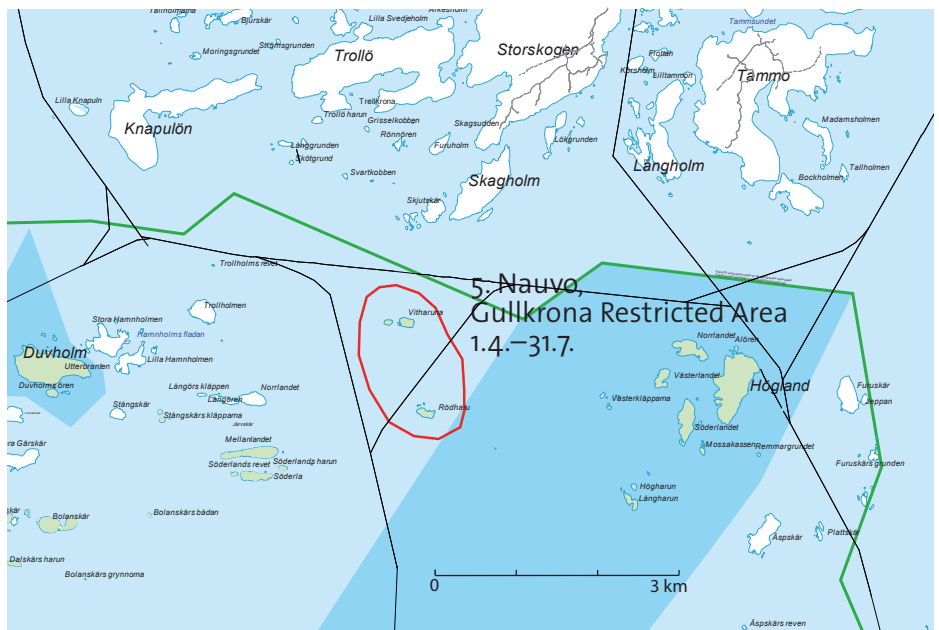
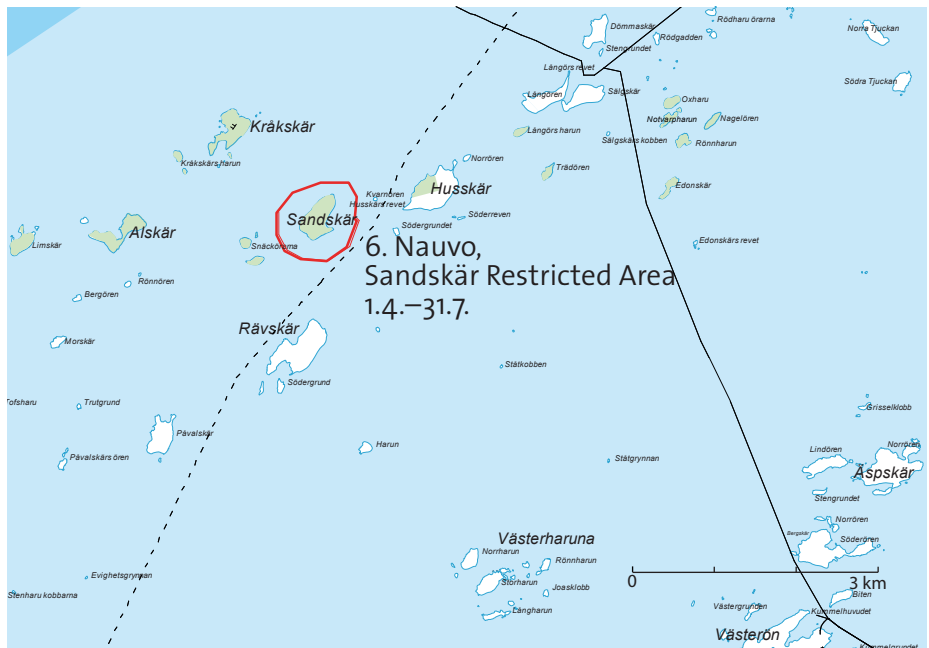
10. Professional fishermen may be granted permits for professional fishing, and local residents may gain permits for fishing for domestic needs in the National Park waters.



11. Hunting permits may only be granted to local residents. Spring hunting of waterfowl, pursuant to section 29 of the decree on amending the Hunting Decree (869/1998), is allowed in the National Park. Permits may also be granted for other hunting purposes. The use of a dog in the hunt is allowed. Limitations on the hunted game species may be added to the permit if it is necessary for conservation purposes.

12. With the exceptions of restricted area 8 and the Borstö village-side part of restricted area 9, the limitations on moving do not apply to the permanent residents of said village, professional fishermen or hunters during a hunt.

13. Metsähallitus may assign pasture lands from the National Park area requiring management to persons living in the local government collaboration area, and for particular reasons to other archipelago residents, and provide them with firewood and livestock fodder.



Activities subject to permit

14. Metsähallitus may grant a permit for moving in a restricted area, for killing or catching animals for research or teaching purposes, and for collecting mineral samples and plants. A Metsähallitus permit is also required for research referred to in the Antiquities Act, for geological studies and mineral prospecting, for the maintenance of access routes and power and telephone lines and equipment, and for the construction and maintenance of navigational equipment, waterway signs and light posts. The permits must be applied for in writing with Metsähallitus. Tourism-related business operations, the organisation of public events, and other equivalent activities within the National Park premises require an agreement between Metsähallitus and the entrepreneur.

15. Under section 3 of the Decree on the Archipelago National Park (1123/1994), actions that are necessary to maintain defence readiness, measures that are essential for the Defence Forces' seafaring safety, measures required for the Defence Forces' regional surveillance purposes, and actions necessary for the Finnish Border Guard to carry out the tasks appointed to it, are allowed in the National Park with a permission from Metsähallitus.

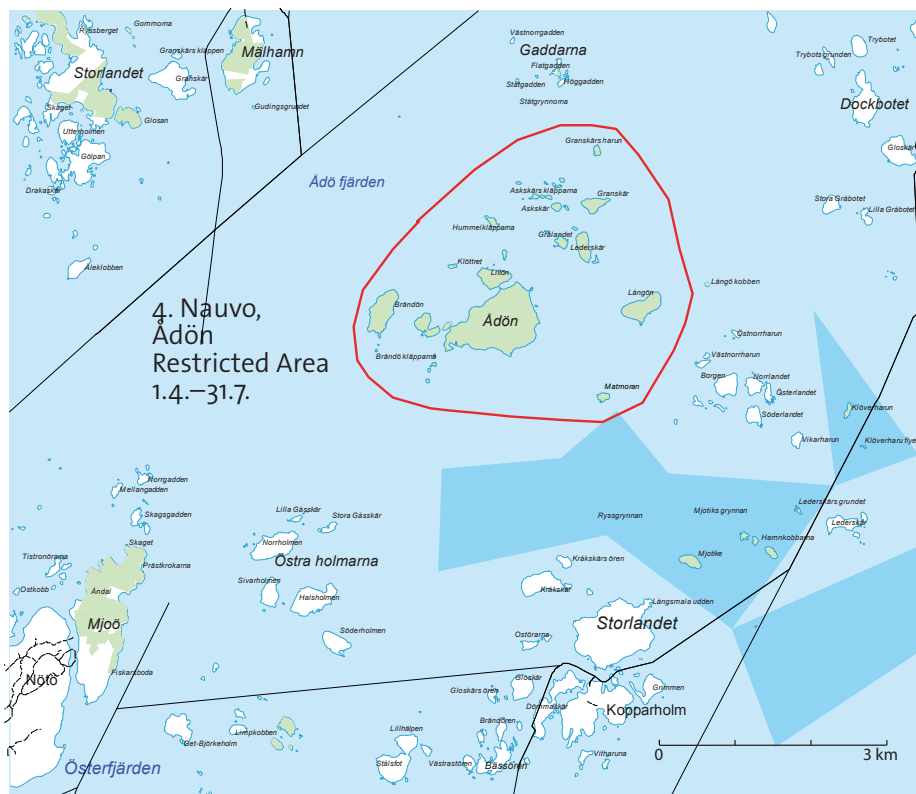
Other regulations

16. The provisions of the Decree on the Archipelago National Park (1123/1994) and of these Park Regulations, which provide authorisation for certain measures within the National Park, do not provide anyone with more extensive rights than what the party in question is otherwise entitled to.

17. A party performing supervisory tasks in the National Park has the right to issue provisions based on these Park Regulations, which the park visitors must follow. The Act on the Archipelago National Park (645/1982) provides public authorities monitoring conservation and park rangers with the right to seize hunting, fishing and collecting equipment and other tools that have been or are intended to be used in a way that violates the rules and regulations in effect in the National Park. The same seizure rights apply to animals caught illegally in the National Park, to plants taken without permission, and to all other items which the visitors are prohibited from taking from the National Park or using there.

18. Violations of the Park Regulations or protection provisions laid down in the Nature Conservation Act are punished under the Nature Conservation Act (1096/1996), unless a more severe penalty is provided elsewhere in law.

19. These Park Regulations repeal the Archipelago National Park Regulations issued on 10 June 1991 by Metsähallitus.





Restricted areas

Between 1 April and 31 July, landing and moving are prohibited on the following islands and islets or their parts that fall within the Archipelago National Park:

1. Restricted areas of Korpo, Aspö and Brunskär

Västra Skärgården in Aspö with the exception of the largest islands, and the Southern islets of the Brunskär village:

Krummarna, Tordmulekläpparna, Vitlandet, Flakaskärsgunden, Pölsan, Pölskläppen, Sjulkläppen, Köpmanskären, Laxgunden, Portkläpparna, Fränukläpparna, Stackskär, Stacksskärs harun, Rödharu, Södra Rönnharu, Södra Fjärdskär, Fjärdskärs kobben, Skorvskär, Rödskären, Moringharu, Stenkläppen, Södra Vitharu, Västerkläppen, Svartkläppen, Svartkläpp kobben, Ståtbådan, Vällingskär, Mörgrundet, Disken, Mårgrundet, Gäddskallen, Vidkobben, Tistronkobben, Stockkläppen, Slagören and the related unnamed skerries.

2. Korpo, Västerö restricted area

Västerö island, Brunskär

3. Korpo, Jurmo and Utö restricted area

The Western part of the Jurmo main island, and islets and reefs between Jurmo main island and Utö:

Estrevlarna, Ömsarsten, Skalmören, Gaddarna, Sanden, Örskär, Örskärs ören, Gropskär, Innerlandet and the related unnamed skerries.

4. Nagu, Ådön restricted area

Ådön, Lillön, Hundskär, Brändön, Klöttret, Långön, Långökobben, Matmorán, Hummelkläpparna, Askskär, Askskärs kläpparna, Lederskär, Granskär, Granskärs haru and the related unnamed skerries.

5. Nagu, Gullkrona restricted area

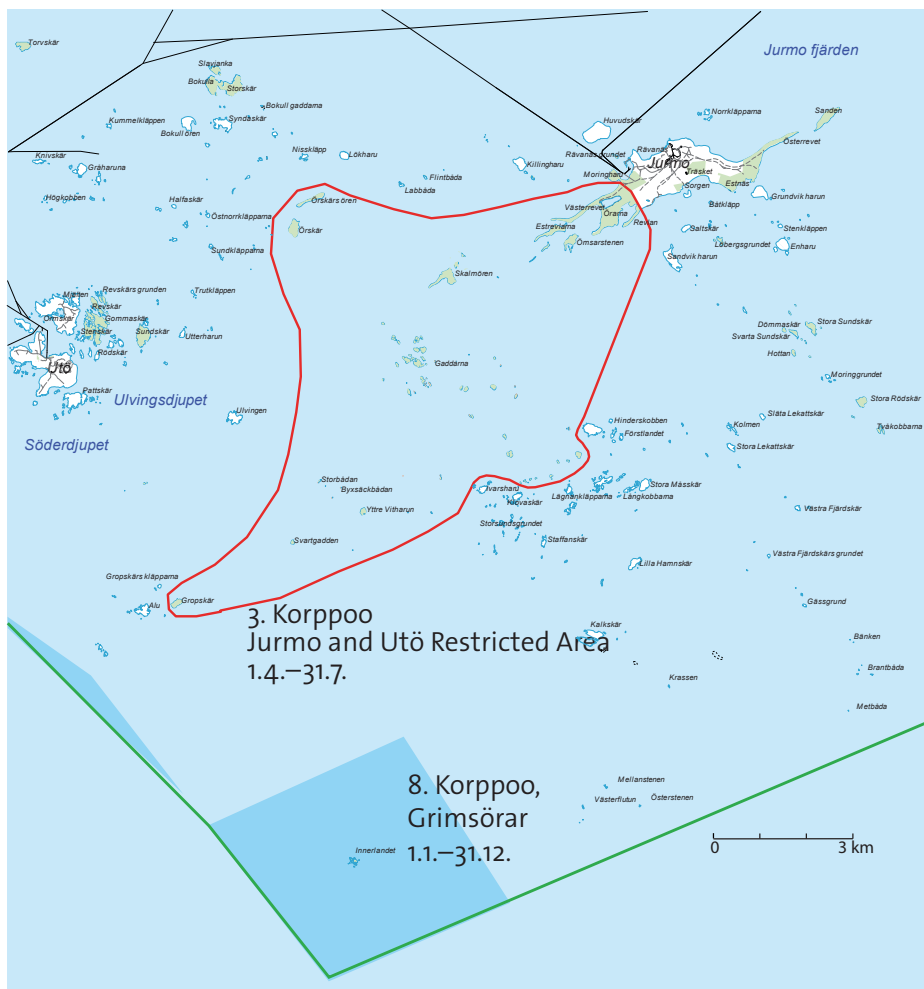
Vitharuna, Rödharu

6. Nagu, Sandskär restricted area

Sandskär island, Lökholm

7. Dragsfjärd, Ölmos restricted area

Norrgrundén, Södergrundén, Kälkklobb, Sandskär, Tallören and the related unnamed skerries.



Landing and moving, as well as scuba diving in the surrounding water areas, is forbidden round the year on the following islands and islets:

8. Korpo, Grimsörar

9. Nagu, Trunsö, Sandholm and Borstö restricted area

Borgen, Långskär, Norr Sumpskär, Glasaskär, Bosskär, Löpskär, Storskär, Egelskär, Hamnkläppen, Grabbaskläppen, Svensör, Kalkskär, Lilla Kalkskär, Alskär, Skitun, Vitskär, Karpharu, Gölsören, Garpharun, Bredkläppen, Långören, Stenkläppen, Svartklobben, Sprängharu, Sundskär, Petklobben, Rysskläppen, Lilla Stubbskär, Stubbskärs kobborna, Stora Stubbskär, Släta Måsskär, Gråkläppen, Gråkläpp grynnorna, Vitningen, Pattakläpp, Härbärgs kläppen, Rosinahällarna, Namnlösan, Smedskären, Storsör, Smäsörarna, Gadden, Skepps-

bådarna, Storharun, Lillharun, Fallbådan, Knivlängnan, Stora Salskär, Lilla Salskär, Salskärs kläpparna, Sandören, Ståtbåda, Kummelskären, Ådskär, Tärskläppen, Gålören, Grisselborg, Stenskär, Labbskär, Fjärdblekorna, Gudinggrund, Kalskär, Sivalskär, Långskär, Laxkobben, Labbharu, Lotan, Blålängnan, Ålbåda, Klovgadd, Klovgadd bådan, Mastbåda, and the related unnamed skerries and water areas.

Restricted military area

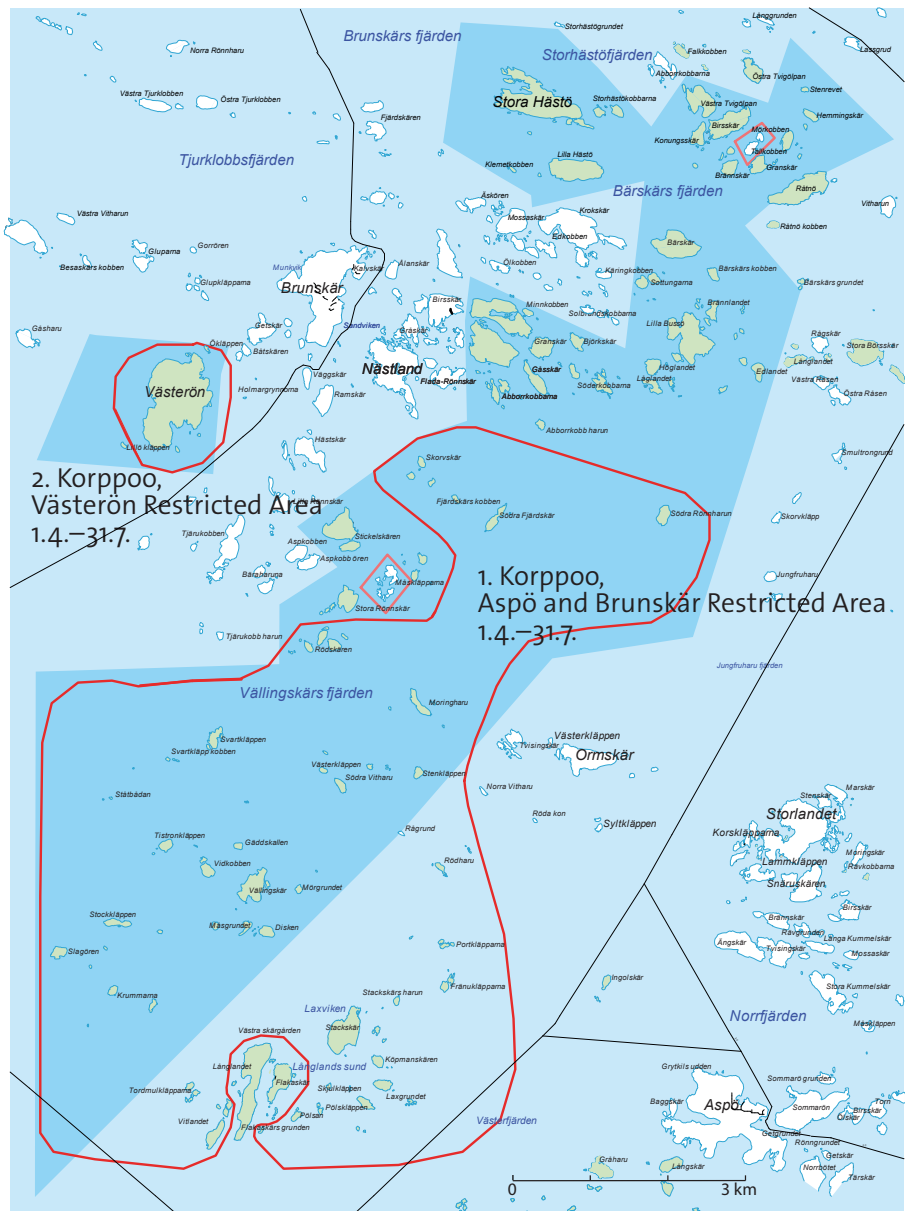
The local government collaboration area of the Archipelago National Park contains four restricted areas pursuant to the Territorial Surveillance Act (755/2000). Information on the relevant operating restrictions is available from the Archipelago Naval Command.

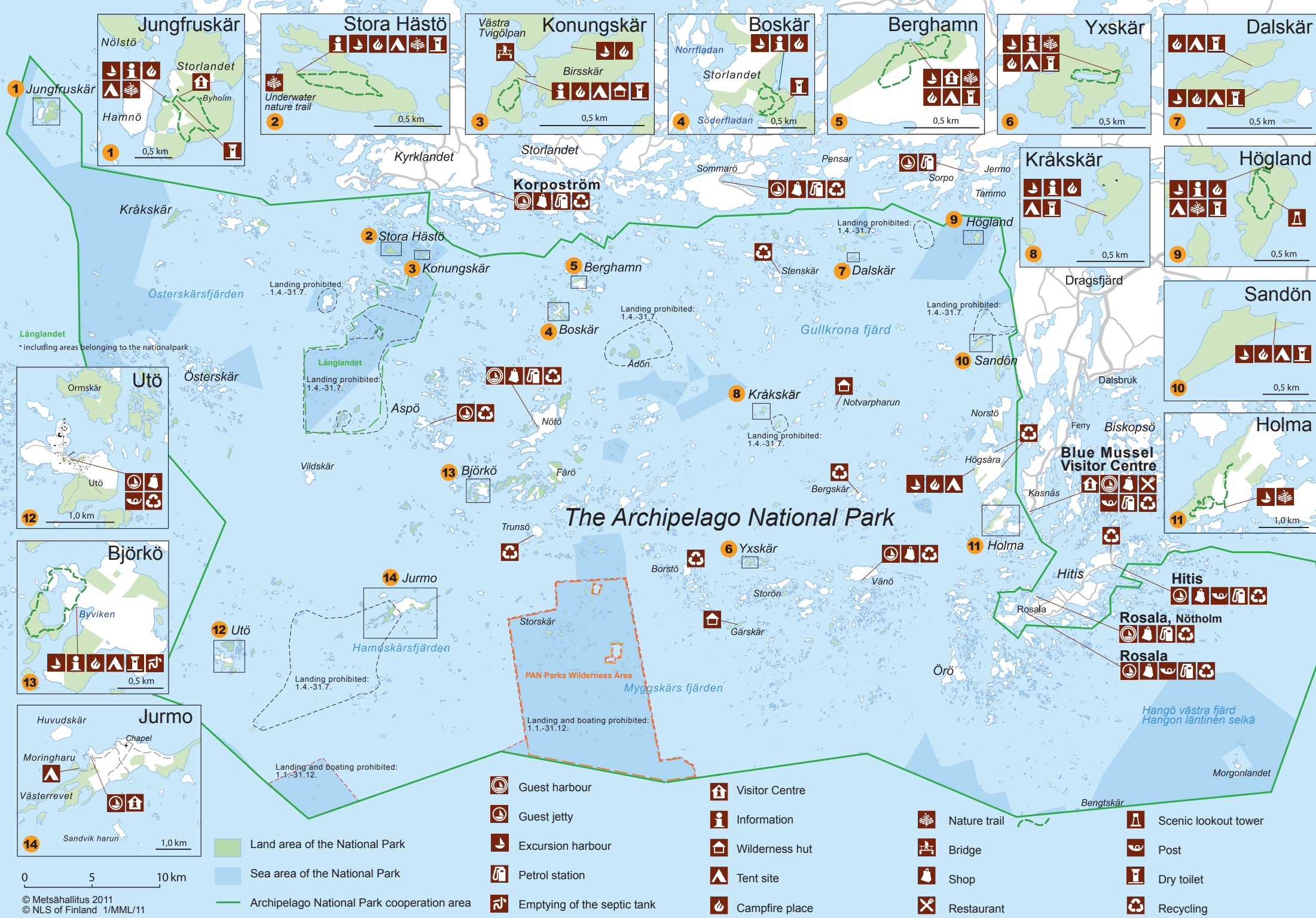


LANDING FORBIDDEN



LANDING AND MOVING IN THE WATER AREA FORBIDDEN





More Information:

Metsähallitus, Parks & Wildlife Finland

Telephone +358 205 64 4620

E-mail [rannikko\(at\)metsa.fi](mailto:rannikko(at)metsa.fi)

