



SAMPO KIVINIEMI / VASTAVALO.FI

Metsähallitus Parks & Wildlife Finland in Lapland

Metsähallitus is a state-owned enterprise, responsible for the management, use and protection of one third of Finland's surface area.

Parks & Wildlife Finland is in charge of public administration tasks of Metsähallitus and comprises *National Parks Finland* and *Wildlife Service Finland*.



PASI NIVASALO / METSÄHALLITUS



PETTERI POLOJÄRVI / METSÄHALLITUS

Species and habitats protected

Basic information on the species and habitats of the protected areas is gathered and active management of the areas contributes to the conservation of global biodiversity.



National Parks Finland

Management of national parks and other protected areas and cultural heritage sites, hiking services, promotion of sustainable nature tourism. KIRSI UKKONEN / METSÄHALLITUS

Income from nature

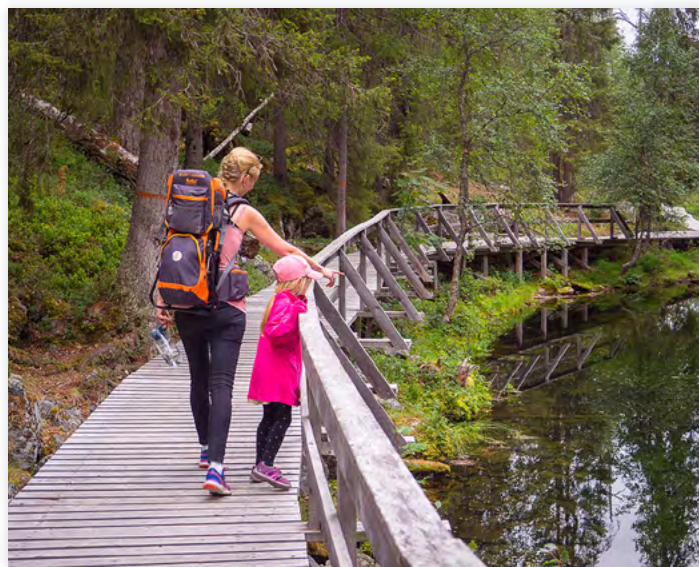
Every euro of public funds invested in Finland's national parks by the authorities brings approximately ten-fold benefits to local economies.



TAPIO TYNYS / VASTAVALO.FI

Cultural heritage fostered

In protected areas you find yourself at the very root of culture. Thousands of archaeological sites and old buildings tell their own silent story of our ancestors.



ANNA PAKKANEN / METSÄHALLITUS

Health from nature

Easy trails, adequate sign-posting encourage people of all ages and capabilities to explore nature.

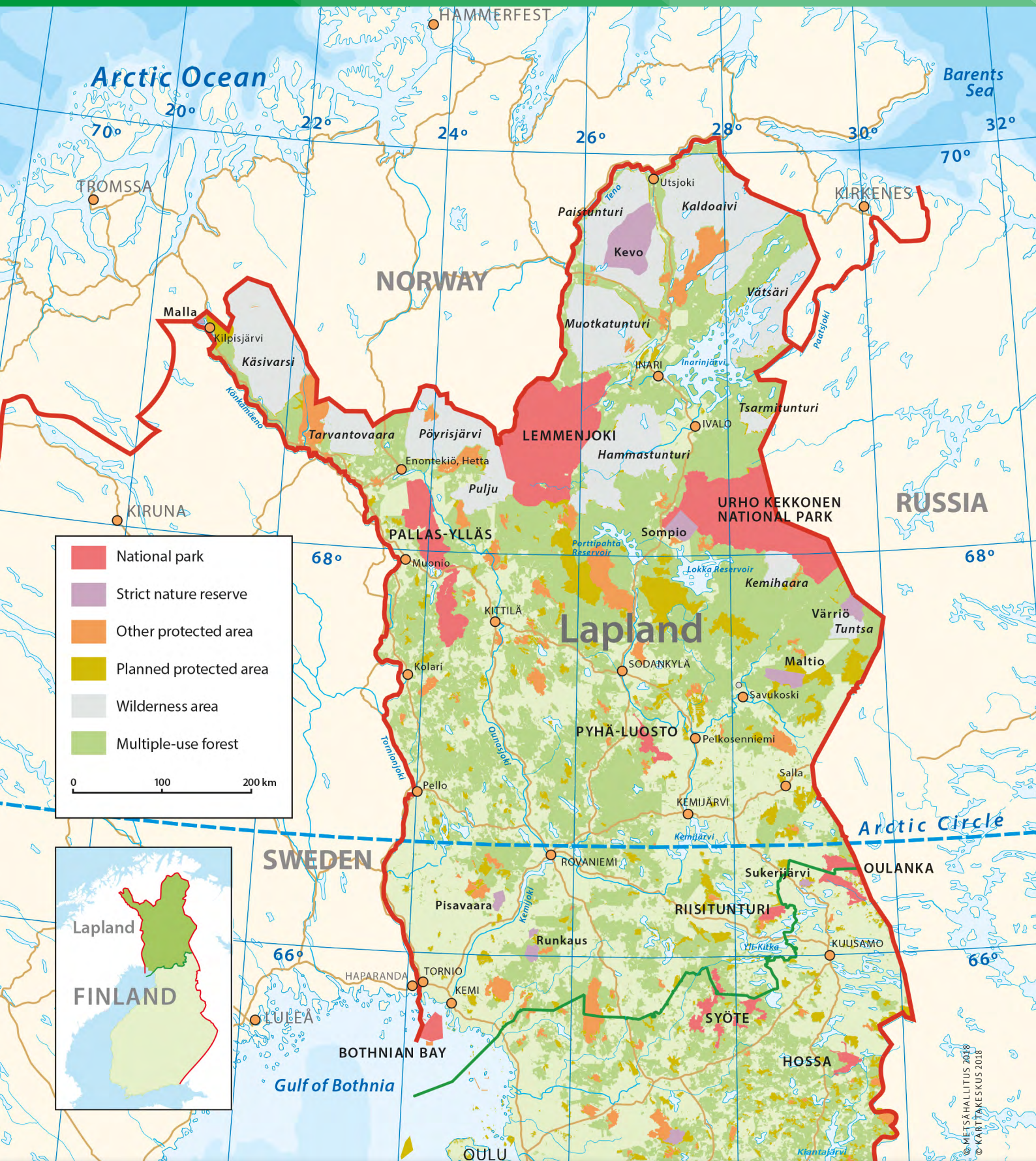


Wildlife Service Finland

Managing and supervising hunting and fishing on state-owned lands and waters. AKU AHLHOLM / METSÄHALLITUS

09/2018
METSÄHALLITUS,
PARKS & WILDLIFE FINLAND

Metsähallitus Parks & Wildlife Finland in Lapland



Metsähallitus Parks & Wildlife Finland manages 3 million hectares in Lapland
 7 national parks • 7 strict nature reserves • 12 wilderness areas • thousands of cultural heritage sites

© METSÄHALLITUS 2018
 © KÄRTTÄKESKUS 2018