

Please respect the breeding areas of the Saimaa ringed seal!

# Linnansaari National Park



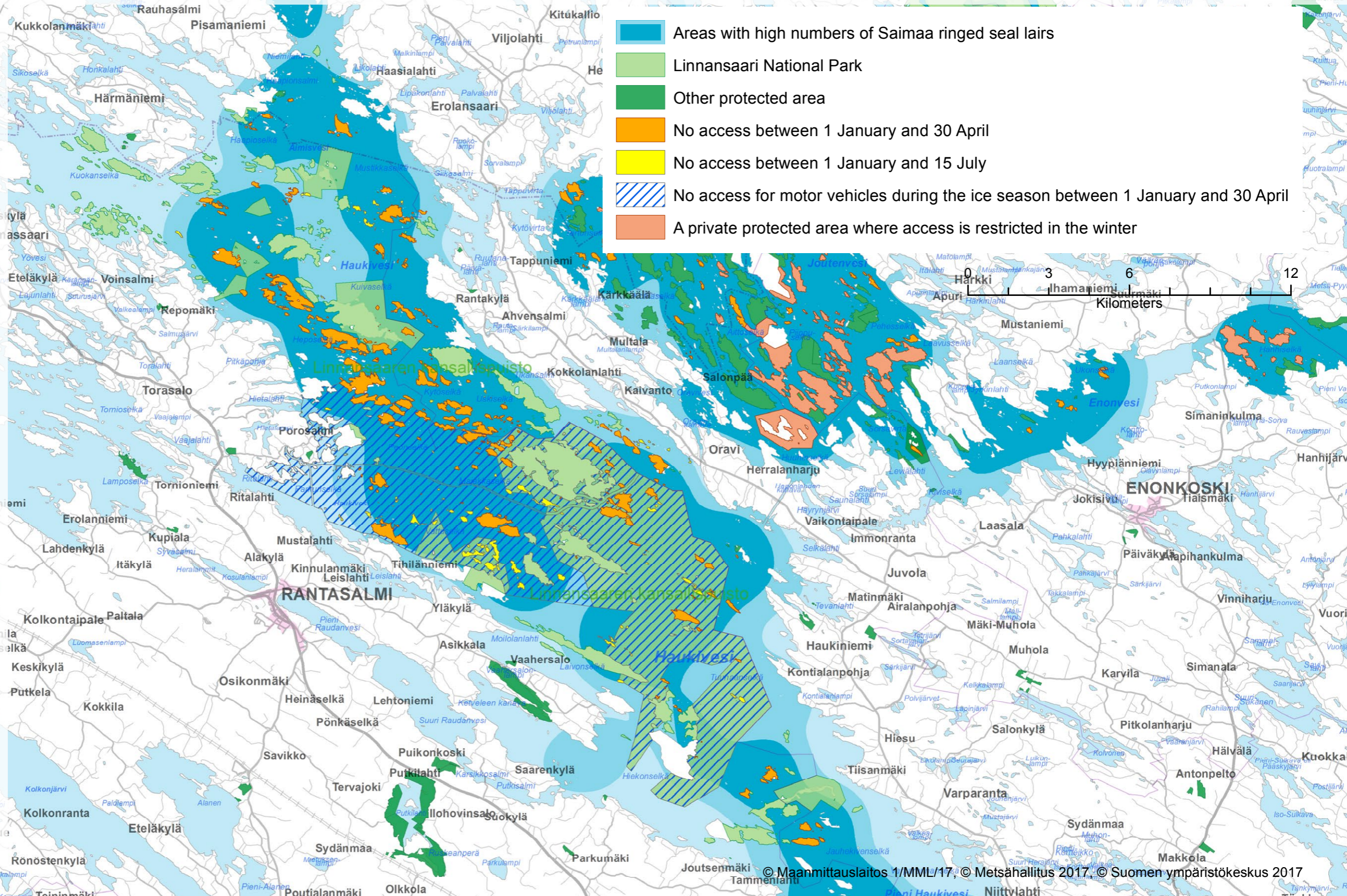
When moving around on the ice of Lake Saimaa between January and April, please respect the breeding areas of Saimaa ringed seals. Also make sure that your dog is kept on a lead. Seal mothers will thank you!

Saimaa ringed seals are at their most vulnerable in winter when the mothers give birth to pups and feed them in snow dens (known as lairs) dug in shoreline snow drifts. When hearing noises from outside the lair, the seal escapes into the water through an ice hole in the lair. Repeatedly escaping into the water disrupts feeding and causes thermal stress which, in the worst case, may be fatal to the pup.

The lair of a Saimaa ringed seal cannot be detected from outside the snow drift. For this reason, it is important to avoid going near small islands and shoreline snowdrifts anywhere on Lake Saimaa. See the map for areas where Saimaa ringed seal lairs are common and where the risk of disturbing mothers and pups is particularly high\*.

While access to the area is not restricted, mother seals will thank you for giving wide berth to islets and shoreline snow drifts. The map also shows protected areas and the areas within them where access is restricted during the breeding season of the Saimaa ringed seal. The restrictions that apply in private protected areas may vary from area to area.

\*The areas where lairs are more common are based on Saimaa ringed seal breeding data from 1987–2013.



- Areas with high numbers of Saimaa ringed seal lairs
- Linnansaari National Park
- Other protected area
- No access between 1 January and 30 April
- No access between 1 January and 15 July
- No access for motor vehicles during the ice season between 1 January and 30 April
- A private protected area where access is restricted in the winter

© Maanmittauslaitos 1/MML/17; © Metsähallitus 2017; © Suomen ympäristökeskus 2017