



Sanginjoki Nature Reserve



- Founded in 2021
- Area 2,567 ha

Metsähallitus Luontopalvelut maintains the hiking trails and structures in the area.

Further information:

Liminka Bay Visitor Centre
Tel. +358 206 39 6059
liminganlahti@metsa.fi

www.nationalparks.fi/sanginjoki
www.excursionmap.fi

 sanginjoki
 sanginjoki_luonnonsuojelualue

Nature Reserve

Sanginjoki

Sanginjoki Nature Reserve is located approximately 20 kilometres from the city centre of Oulu. The area consists of former multiple-use forests, old spruce forests, wooded mires and dry esker heaths, as well as ponds, mires and springs along the trails. Sanginjoki Nature Reserve offers a wide range of hiking and outdoor activities, and it is popular among berry and mushroom pickers.

The Sanginjoki forests chiefly consist of old heath forests, which become more varied thanks to the pine mires, lush wooded mires, as well as springs and small waterbodies. The Asmonkorpi old-growth forest and the old, moss-covered coniferous forest of Iso Polvikangas have remained untouched for a long time. In the Sanginjoki Nature Reserve, you can sight many rare forest bird species, such as the Siberian jay, red-flanked bluetail, three-toed woodpecker, capercaillie and the Eurasian pygmy owl.



Isokankaan kierros Trail 10.7 km

The hiking trail runs through the most significant esker landscape in the Oulu region. The highest point in Oulu, the nearly 90 metres high esker Takaharju, is located in the Isokangas area. The area mainly consists of dry pine heaths, but there are also old spruce forests along the trail. The trail intersects with forest roads at several points, and a short section on the western part of the trail follows the same route as Korpilammen kierros Trail. There are campfire sites, dry toilets and woodsheds in Kummunkorpi and by Lake Isonkankaanjärvi. Ahinmaja rental hut is also located by the lake.

The new route of the Iso-kankaan kierros Trail has temporary signposts along it.

Kalimeenkierros Trail 5.9 km

The trail will take you to the shore landscape of Kalimeenlampi Pond and River Kalimeenoja, which runs from the pond, as well as to the old coniferous forest of Iso Polvikangas.



erous forest of Iso Polvikangas. Along the trail, you will see the restored Kalimeenlamminsuo Mire, islets of herb-rich forests and old spruce forests. The trail intersects with forest roads and snowmobile routes at several points. There are campfire sites, dry toilets and woodsheds at Myllykoski and by Lake Kalimeenlampi.

Korpilammen kierros Trail 4.9 km

Korpilammen kierros Trail starts from Loppula parking area and runs around Korpilampi Pond. Along the trail there are young forests, coniferous swamps, pine heaths, former forestry areas and mires. The shores of Korpilampi Pond are eutrophic, and the pond is overgrowing. You will find a campfire site, a dry toilet and a woodshed on the northern shore of Korpilampi Pond.

The new route of the Korpilammen kierros Trail has temporary signposts along it.

Sanginjokivarsi

Sanginjokivarsi is a popular site along River Sanginjoki. The path along the river is easy to walk. From the riverbank, you can observe the wide windthrow area, where fallen, dead trees provide a habitat for thousands of creatures, from birds and mammals to insects and fungi. There are several campfire sites, and firewood can be found from the woodshed by the first site. Dry toilet is located along the service road.

METSÄHALLITUS 10/2023.

PHOTOS: HARRI TARVAINEN, ULLA MATTURI

Show Respect for Nature when You Hike

The terrain in Sanginjoki Nature Reserve erodes easily. Please trek along the maintained trails.

In Sanginjoki Nature Reserve, the following are:

Allowed

- Walking, skiing, rowing and canoeing
- Picking berries and edible mushrooms
- Temporary camping at rest spots
- Angling and ice fishing, except in the separate restricted areas

Restricted

- Lighting campfires is only allowed at designated sites.
- Fishing is allowed with the required permits

Forbidden

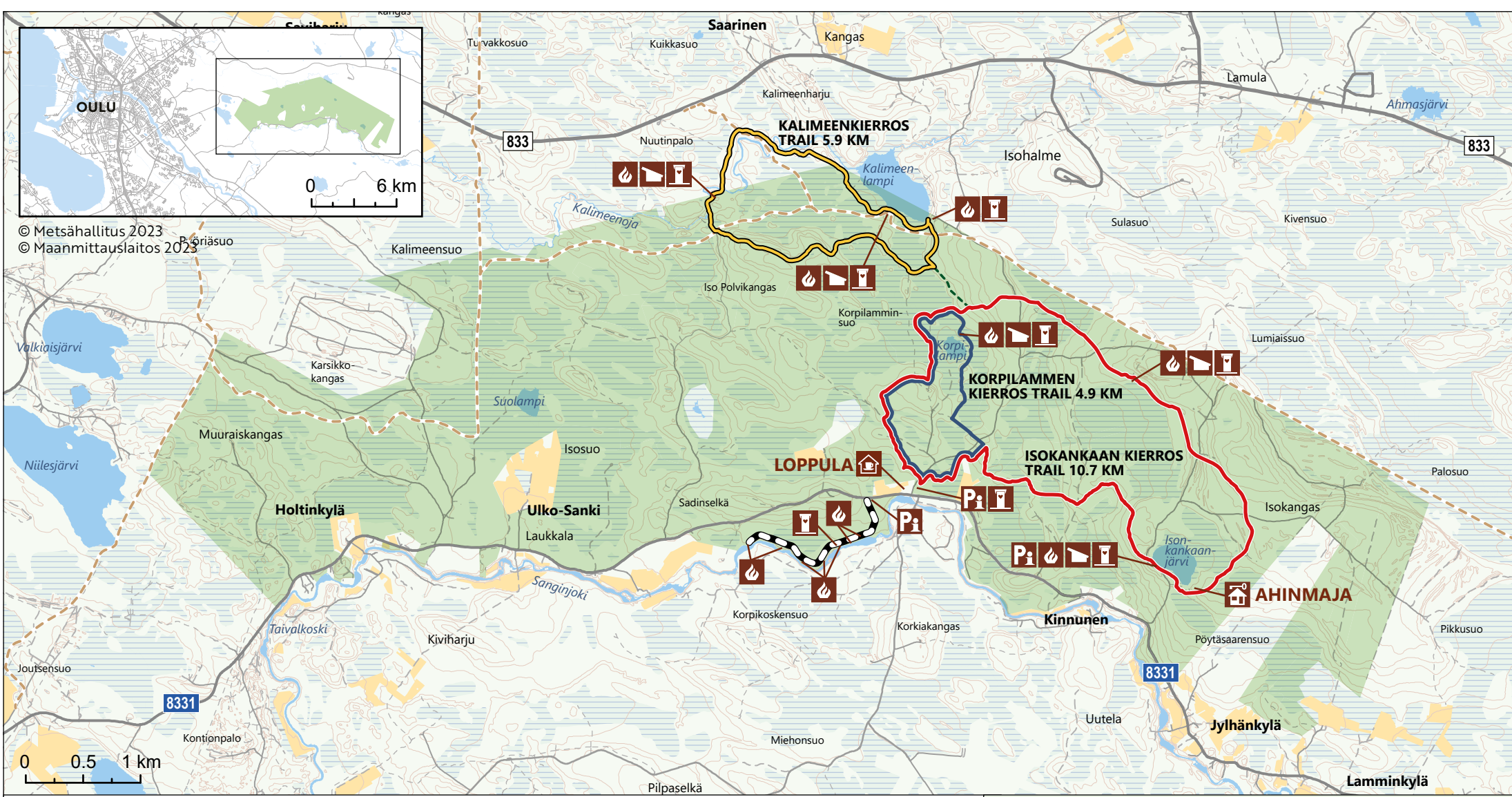
- The lighting of campfires, even at the campfire sites, when a forest fire warning is in effect
- Damaging the soil or bedrock
- Driving a motor vehicle, except along the designated roads
- Leaving litter in the area and damaging the structures
- Letting dogs run free

Leave No Trace

- Take away everything you brought along
- Put biowaste in a dry toilet at a rest spot
- Only burn clean paper or cardboard at a campfire site

Emergency number 112

Pay attention where you are phoning from – there are areas with no mobile phone coverage!



© Metsähallitus 2023
 © Maanmittauslaitos 2023

LEGEND - SELITE

- Nature reserve
Luonnonsuojelualue
- Pi Parking and information board
Pysäköinti ja opastustaulu
- 🔥 Campfire site
Tulentekopaikka
- 🏠 Lean-to shelter
Laavu
- 🏠 Rental hut
Vuokratupa
- 🏠 Nature café
Luontokahvila
- 🚻 Dry toilet
Käymälä

HIKING TRAILS - RETKEILYREITIT

- Isokankaan kierros 10.7 km
- Kalimeenkierros 5.9 km
- Korpilammen kierros 4.9 km
- Connecting trail - Yhdyspolku
- Sanginjokivarsi
- Snowmobile track - Moottorikelkkareitti

MAINTENANCE - ALUEEN YLLÄPITÄJÄ

Metsähallitus Luontopalvelut
Contact information - Yhteystiedot:
 Liminka Bay Visitor Centre - Liminganlahden luontokeskus
 tel. 0206 39 6059, liminganlahti@metsa.fi

EMERGENCY NUMBER - HÄTÄNUMERO 112

All locations do not have cell service!
 Käynnä ei kuulu kaikkialla alueella!