



## Oulujärvi Hiking Area

- Founded: 1993
- Total area 78,3 km<sup>2</sup>, of which land areas 14 km<sup>2</sup>
- The landscape and nature values are taken into account in the management of the area.

Metsähallitus, Parks and Wildlife Finland, is responsible for the hiking trails and structures in the area.

Further information:

- Liminka Bay Visitor Centre
- Tel. +358 206 39 6059,
- [liminganlahti@metsa.fi](mailto:liminganlahti@metsa.fi)

[nationalparks.fi](http://nationalparks.fi), [excursionmap.fi](http://excursionmap.fi), [eraluvat.fi](http://eraluvat.fi), [rokuageopark.fi](http://rokuageopark.fi)



## Hiking Area

# Oulujärvi



Oulujärvi Hiking Area extends to the land and water areas of Niskanselkä and Manamansalo Island in Lake Oulujärvi. The hiking area is located about 80 km west of Kajaani and 150 km east of Oulu. The area is part of Rokua Geopark, which is included in the UNESCO Global Geoparks Network. Oulujärvi Hiking Area boasts rocky islets, gorgeous sandy beaches, crystal-clear ponds and barren pine forests. There are excellent opportunities for nature activities in the area.

The shores of Lake Oulujärvi are shaped by the wind, waves and water-level regulation, as well as by ice masses in the winter. The species that thrive in the sandy esker area are hardy and tolerant of dry conditions. Despite its barrenness, the lake environment is a treasure trove, no matter what the season. It is fascinatingly beautiful and offers plenty to experience, such as catching fish as well as picking berries and mushrooms.

### Pack Some Food and Set off for a Trail

There are a large number of roads and paths on Manamansalo Island, and the total length of the marked trails is 14 km. The trails have been marked in the terrain with blue paint signs. The Särkinen campfire site is also accessible by wheelchair,

but there are gently sloping ascents and descents along the route. There are various kinds of campfire sites along the hiking trails and on islands, as well as good recreational fishing opportunities, so there is a great deal to do for many days. The Teeriniemi boat harbour on Manamansalo Island serves all boaters.

### Island Adventures

The islands in the Oulujärvi Hiking Area can be accessed by canoe and by your own boat. There are boat jetties on the islands of Kuostonsaari, Kaarresalo and Honkinen. From Kuoston kulma campfire site, a 4-km trail, marked with red signs, runs to Säippä lean-to shelter. The backbone of Kuostonsaari Island is a steep esker that, in places, rises to a height of 35 metres above the lake's surface level. The old pine heaths and

long sandy beaches invite you on an adventure.

### Fishing on the Sea of Kainuu and by the Crystal-clear Ponds

The hiking area provides you with good opportunities for recreational fishing on Lake Oulujärvi and by the crystal-clear ponds of Manamansalo Island. The Manamansalo angling permit area 5571 covers ten ponds, where you can catch perch, whitefish, grayling and trout. Särkinen Pond has been stocked with catch-size rainbow trout. You can buy fishing permits from Manamansalo Camping, the [Eraluvat.fi](http://Eraluvat.fi) webshop, as a mobile permit, or from the service number +358 20 692424 (from 9 am to 4 pm).

Further information and fishing rules: [www.eraluvat.fi](http://www.eraluvat.fi).



METSÄHALLITUS 08/2022. PHOTOS: MAARIT VAAHTERANOKSA

## Show Respect for Nature when Hiking or Boating

The terrain of Lake Oulujärvi's islands and many of its shores is easily eroded. Please trek along the maintained trails.

### In Oulujärvi Hiking Area, the following are

#### Allowed:

- Walking, skiing, rowing and canoeing
- Picking berries and edible mushrooms
- Temporary camping on the islands, in Manamansalo only at rest spots.
- Angling and ice fishing, except in the separate restricted areas.

#### Restricted:

- Lighting a campfire is only permitted at designated sites.
- Fishing is allowed with the required permits.

#### Forbidden:

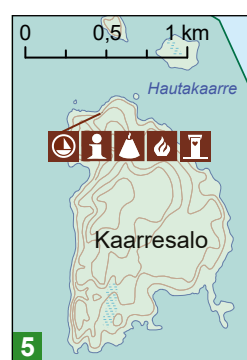
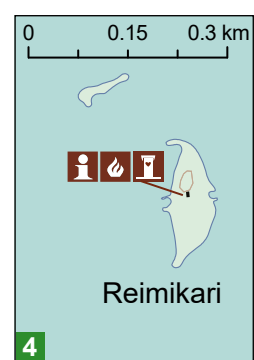
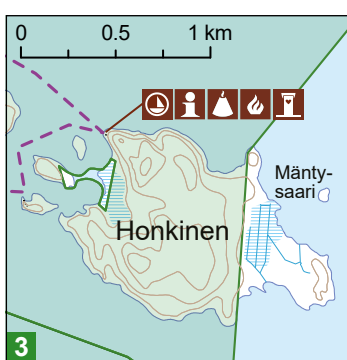
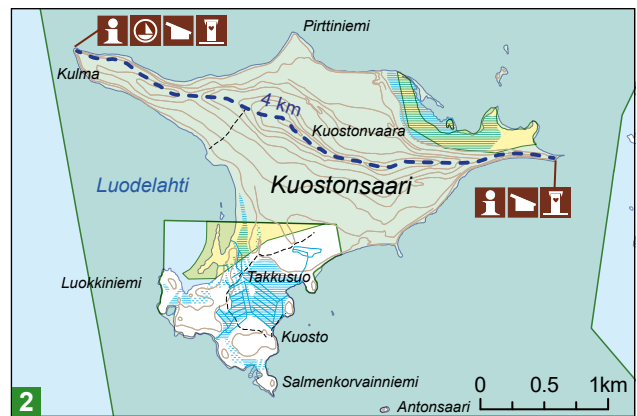
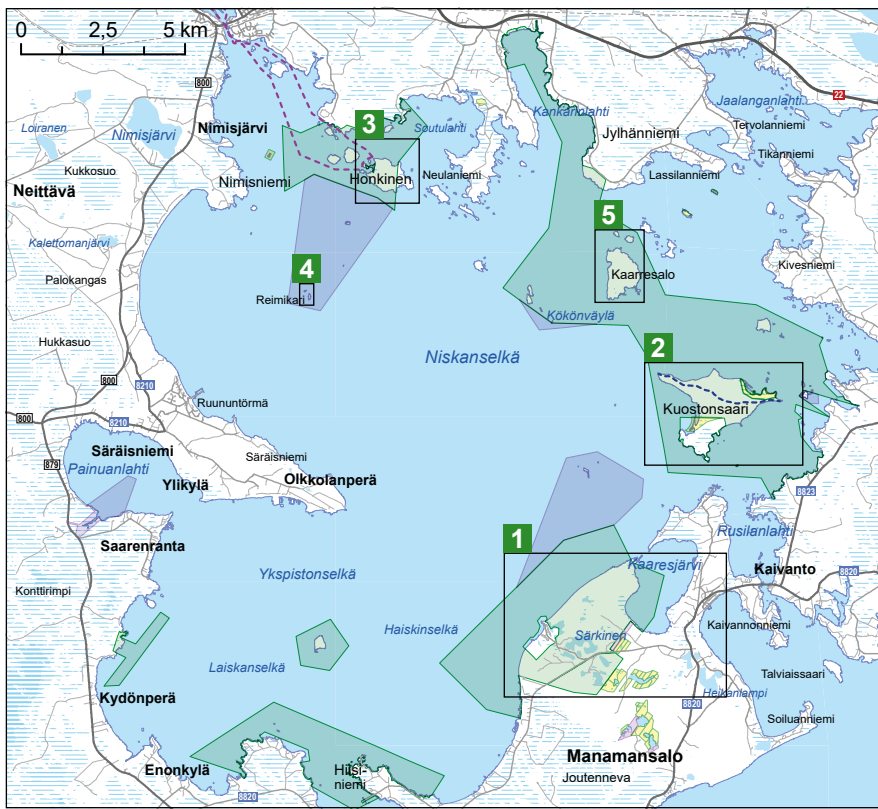
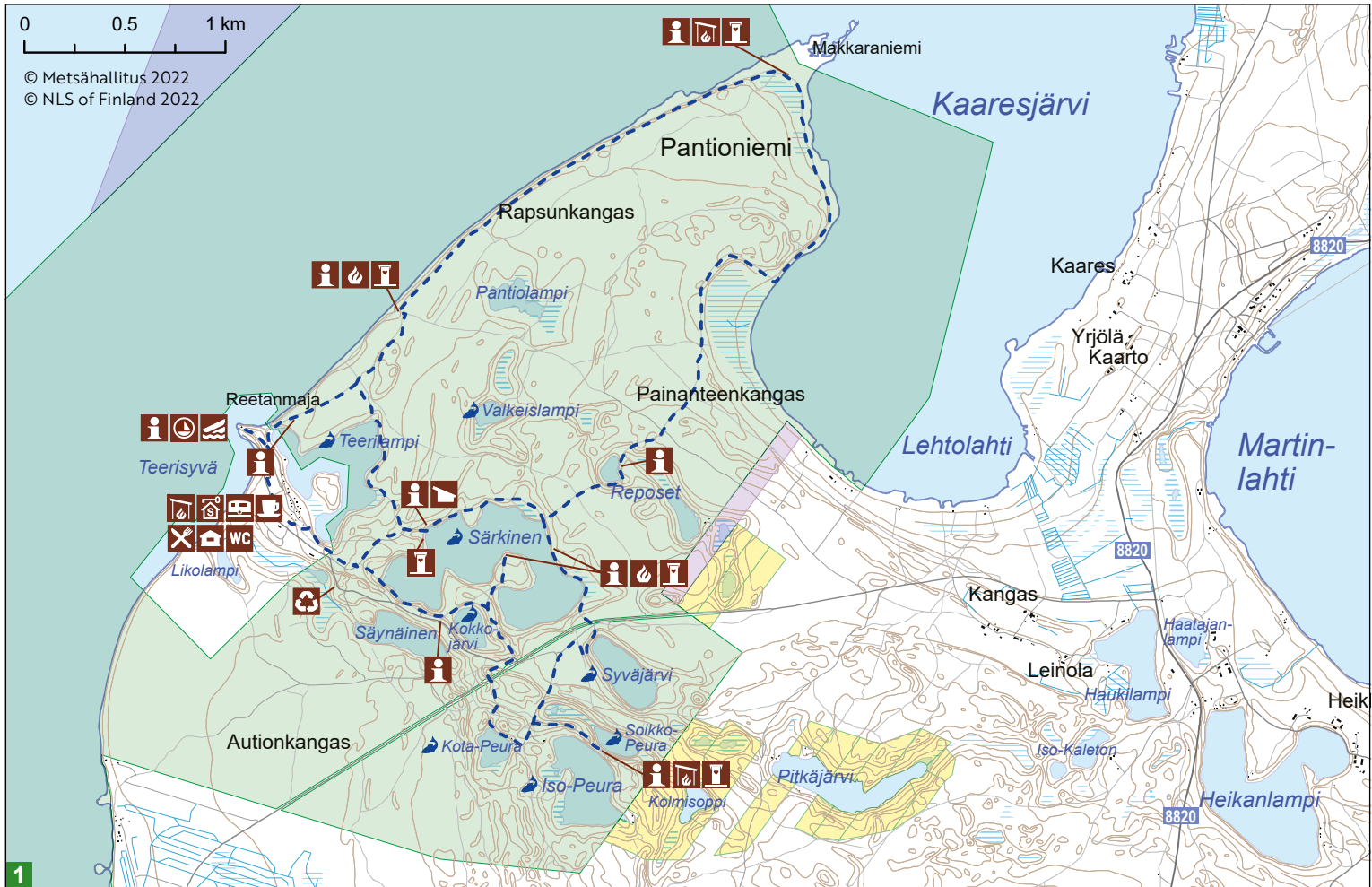
- The lighting of a campfire when a forest fire warning is in effect, even at the campfire sites
- Damaging the soil or bedrock
- Driving a motor vehicle beyond the designated roads
- Leaving waste in the area and damaging the structures
- Letting dogs run free, except during hunting activities
- Taking your own boats and canoes to the ponds in the area.

#### Leave No Trace

- If you can take it there, you can also take it back.
- Put biowaste in a compost at a rest spot.
- Only burn clean paper or cardboard at a campfire site.

#### Emergency number 112

Pay attention where you are phoning from – mobile phone coverage is not available in all parts of the national park!



**LEGEND - SELITE**

Oulujärvi hiking area Oulujärven retkeilyalue	Recreational fishing Virkistyskalastusalue
Nature reserve Luonnonsuojelualue	Boat and canoe launch Vesillelaskupaikka
Private nature reserve Yksityinen suojelualue	Café Kahvila
Information board Opastaulu	Restaurant Ravintola
Jetty Venelaituri	Holiday cabins Mökkimajoitus
Campfire site Tulentekopaikka	Dry toilet Kuivakäymälä
Cooking shelter Keittokatos	WC Käymälä
Lean-to shelter Laavu	Recycling Jätteen lajittelupiste
Campfire hut Kota	<b>TRAILS - REITIT</b>
Reservable sauna Varausauna	Hiking trail Retkeilyreitti
Camper sites Matkailuajoneuvoalue	Boating route Veneilyreitti