



Urho Kekkonen National Park

- Area 2 550 km²
- Founded in 1983
- Location: Sodankylä, Savukoski, Inari



Metsähallitus – the Manager of the National Park

- Urho Kekkonen National Park Customer Service
- tel. +358 206 39 7200
- ukpuisto@metsa.fi
- nationalparks.fi/urhokekkonennp
- facebook.com/ukpuisto



Take in the vast expanses of the Urho Kekkonen National Park and the tales told by its fells, and hike to the cosy warmth of a hut by nightfall. The national park fulfills dreams of every hiker, and can be accessed directly from Saariselkä resort. The wide-open landscape is also home to none other than Santa Claus, who lives on the mysterious Korvatunturi fell.

Land of bare fell tops and deep forests

Hikers can make their way into the broad fell ranges and deep forests of the Urho Kekkonen National Park wilderness straight from Saariselkä and Kiilopää. Set out on one of the national park's themed day hikes and let them whisk you away into the magical tales of the fells.

The park boasts some 130 bird species, some of which are endangered. The most commonly found birds are the willow warbler, brambling, meadow pipit, redwing and common redpoll. The Siberian jay, a hiker's companion and bringer of good fortune, can be found flitting and bouncing about the rest stops. The most prevalent mammal in the park is the reindeer. Reindeer husbandry has been the main source of livelihood of the Sámi for centuries. Even today, the park is grazing area for reindeer from three Reindeer Herders' Associations.

National Park

Urho Kekkonen

Call of the wild

Hear the call of the wild and wander free along the trails, following the example of the official bird of the national park, the golden eagle. In the vast wilderness of Urho Kekkonen National Park, you'll find plenty of space for yourself and your thoughts. Let your feet carry you toward the highest peak in the park, Sokosti. From its summit (718 asl), you'll be able to admire one of the last wilderness areas in Europe.

As you wind your way through and across the broad fells and their bare tops, you will encounter other beautiful natural treasures, such as the verdant hideaway of Paratiisikuru Gorge, the rocky slopes of Pirunportti Gorge, the surging rapids of Kotaköngäs and the Nuorttijoki River, which wends its way through a majestic canyon in the southeast section of the park.

The bogs and spruce forests in the southern part of the park as well as the northern fells and pine forests are also home to the park's large carnivores: bear, wolf, wolverine and lynx.

The warmth of wilderness huts

Whether under the shimmering northern lights or the midnight sun, the wilderness hut is the trusted companion of all backwoods wanderers, the destination of choice when the light begins to dim. The hut network in the Urho Kekkonen National Park is the most extensive in Finland. Hikers setting out on their treks are served by several wil-

derness and rental huts. Weary walkers can even make their way to the Lurojärvi wilderness sauna, whose soothing steam will relax tired muscles.

There are numerous day trip huts, lean-to shelters and campfire sites along the marked trails for hikers to take a break.

First footprints

Old settlements, the remains of reindeer hunting pits and other traces of human activity tell of the area's rich history before the national park was established. The old tent sites and fences used in reindeer husbandry can be found at, for example, Pikku-Lurojärvi, Niilanpää and Naltio.

The culturally and historically important settlements at Luttajoki and Suomujoki offer a window into the building tradition of the Skolt Sámi and, located right on the Russian border, the Raja-Jooseppi Homestead allow visitors to experience life as a homesteader in the early 20th century. The wilderness holds countless tales – many legends come from the previous inhabitants and wanderers of these parts.

Connections

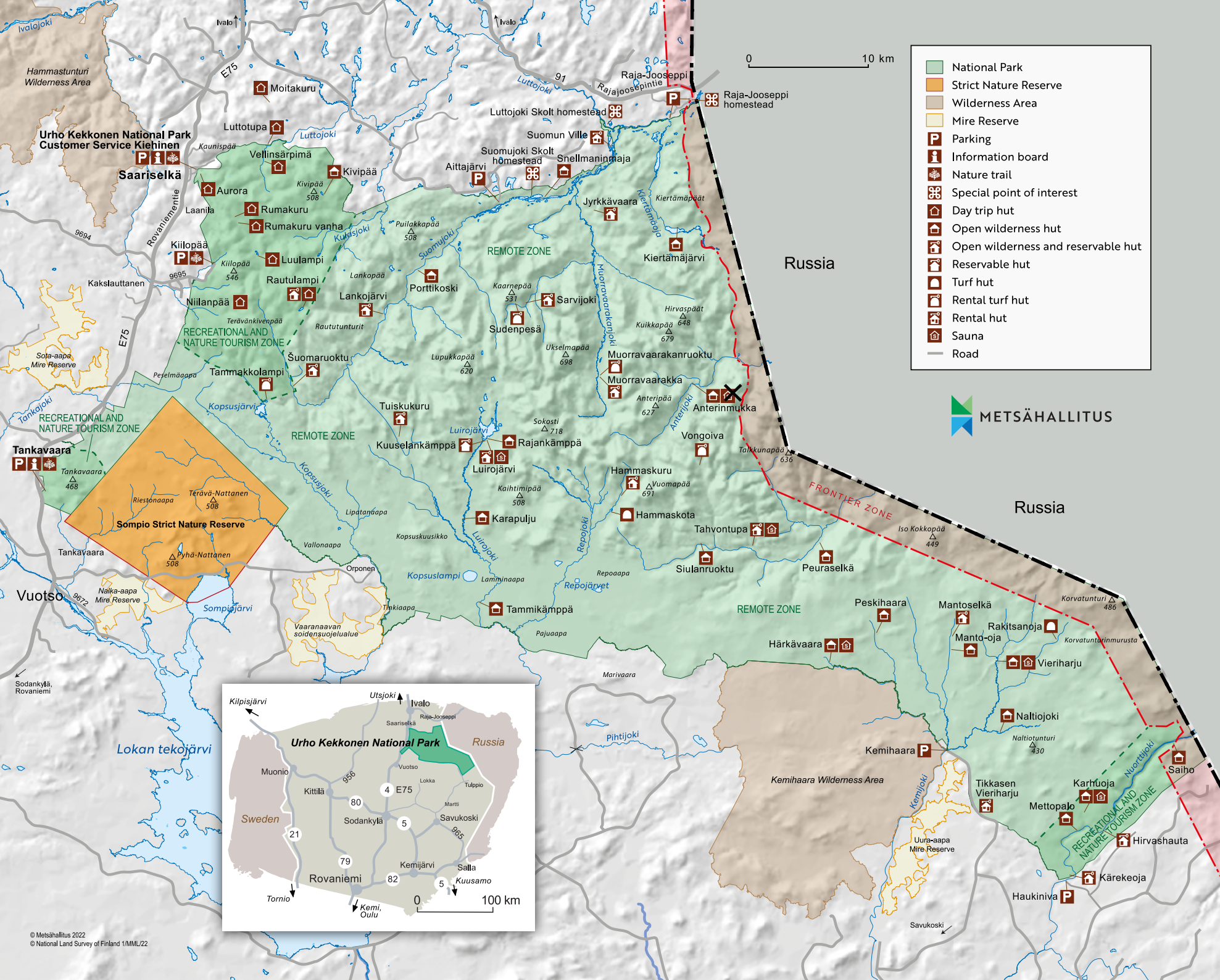
There are several daily buses from Rovaniemi to Tankavaara, Kakslauttanen and Saariselkä. There is also bus service from Kemijärvi to Savukoski, from which visitors can get to the park by taxi. For visitors flying in to Ivalo, there is bus service to Saariselkä and Kiilopää. Contact our customer service and we'll be happy to help you plan your visit.

Enjoy the outdoors while conserving nature

- Respect nature and take others in the area into consideration.
- You are permitted human-powered access to all parts of the national park except the border zone.
- At summer time mountain biking is allowed on a marked trails and a few unmarked trails and, when the ground is fully covered by snow, everywhere in the park except on ski tracks.
- You may make open fires at designated campfire sites in the national park's recreational zone. Elsewhere, in the so-called remote zone of the park, temporary campfires are permitted except at Paratiisikuru, Lumikuru, the Raja-Jooseppi Homestead museum area and Skolt Sámi homesteads. Open fires are absolutely prohibited when there is a forest fire warning in effect.
- Leave no trace. Small amounts of clean paper and cardboard may be used as tinder; all other waste must be carried out.
- You must keep your pet on leash at all times.
- You may pick berries and mushrooms.
- Leave plants in place, do not cut down any trees and let animals live in peace.
- Soil and rock are also part of nature. Let the moss grow on rocks without leaving any trace of your visit on fell summits or along trails.
- Emergency number 112. Some parts of the park have no mobile phone reception!
- nationalparks.fi/urhokekkonennp/instructionsandrules

METSÄHALLITUS PARKS AND
WILDLIFE FINLAND 12/2022
PHOTO: PASI NIVASALO
TRANSLATION: LINGSOFT OY
GRANO OY, 5000 COPIES





- National Park
- Strict Nature Reserve
- Wilderness Area
- Mire Reserve
- Parking
- Information board
- Nature trail
- Special point of interest
- Day trip hut
- Open wilderness hut
- Open wilderness and reservable hut
- Reservable hut
- Turf hut
- Rental turf hut
- Rental hut
- Sauna
- Road



National Park
Urho Kekkonen

